



## Complete Command without Removing Your Helmet

- **Grinding**- Simply press the oversized shade control button and the auto darkening filter is locked in to a shade 4. This eliminates filter flickering while grinding or brazing. Both are now possible without helmet removal. Depress control button again to reset ADF.
- **Shade range selection**- This sliding switch can be used to select shade ranges of 5-9 and 9-13. Choose your range and then adjust to the appropriate shade using the shade level control knob.
- **Shade level control**- Adjust this control knob to select the shade within settings of 5-9 or 9-13. Selections can be made according to the welding process making this one of the most versatile helmets on the market.
- **Sensitivity control**- Factory set at red dot for most procedures. Adjustable to meet different welding applications including microplasma, plasma cutting, and low amperage TIG welding to name a few. Match the sensitivity level to your specific need.
- **Delay switch**- By using the sliding switch, the time delay from dark to light can be adapted to your individual requirements.
- **Solar cells**- Optrel Expert by Uvex's proven solar technology ensures a continuous power supply while also eliminating the need for on/off switches and untimely/costly battery changes.
- **Adjustable sensor bar**- Eliminate the effects of ambient light. Simply slide the sensor bar up and the angle of detection will open from 60° to 120°, which optimizes performance during low current and over the head welding. Keep it down and reduce the chances of a nearby arc darkening your lens.
- **Eye protection**- Several LCD's and special filters provide permanent Shade 14 protection from dangerous UV and IR radiation, even in the bright state.



Part No. K604- Cosmic Copper



Part No. K600- Charcoal



Part No. K602- Silver



Part No. K601- Blue



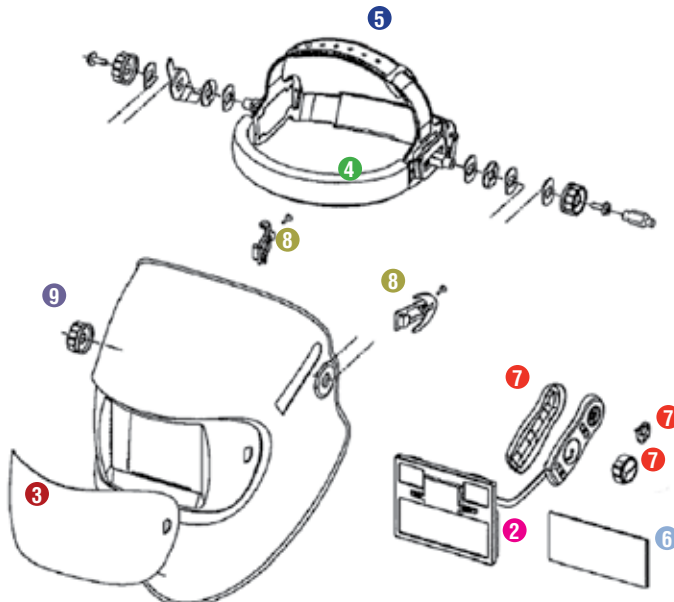
Part No. K603- Green

## Satellite™ ADF Shade Cartridge 2" x 4-1/4"

- Two-year warranty on ADF filter.
- Part No. K610



## Parts Diagram- Optrel® Satellite™



Code	Part No.	Description	Quantity
2	K596	Satellite shade cartridge	1 each
3 (A)	K5910	Satellite front cover lens	Set of 2
3 (B)	K5911	Satellite front cover lens	Set of 5
4	K5822	Sweatband	Set of 2
5	K5821	Headgear	1 each
6	K5812	Inside cover lens	Set of 5
7	K5920	Potentiometer knob, back cover, & sensitivity knob	1 Set
8	K5921	Cover lens connection clips	Set of 2
9	K5820	Potentiometer knob only	Set of 10

## Welding Helmets

### Orion™

#### Auto-Darkening Welding Helmet (Automatic or Manual)

- Variable shades: 9–13 (automatic or manual).
- Solar powered.
- All adjustment controls on outside of helmet.
- Dark-to-light delay switch – select fast or slow.
- Telescoping headgear design with patented eccentric knob.
- Two-year warranty on ADF filter.
- Long-life, easy-to-change cover plate design with integrated seal.
- Shade level automatically adjusts as arc light intensity changes.
- Automatic and manual shade settings.

Part No. K570 - Black

Part No. K575 - Magic Blue



Part No. K570



Part No. K575

### Orion™ Cartridge

2" x 4-1/4"

Part No. K597

### MiraPlus™

#### Auto-Darkening Welding Helmet

- Selectable shades: 10 and 11.
- Solar powered.
- Telescoping headgear design with patented eccentric knob.
- Two-year warranty on ADF filter.
- Long-life, easy-to-change cover plate design with integrated seal.
- Shade 10 and 11 selectable via non-contact toggle switch.



Part No. K532- OSE Blue



Part No. K533- Black, unpainted,  
selectable shade 10 or 11

### MiraPlus™ ADF Shade Cartridge

2" x 4-1/4"

- Two-year warranty on ADF filter.

Part No. K593



### K700

The Optrel® Galaxy stationary 2" x 4-1/4" model meets the demands of the everyday welder by providing comfort and style.

- 2" x 4-1/4" viewing area.
- Install an Optrel® NOVA™ ADF cartridge for the ultimate experience in auto darkening technology (sold separately).
- Shade 10 passive filter and cover lens included.

Part No. K700- stationary filter lens

### NOVA™ Shade Cartridge 2" x 4-1/4"

Automatic shade adjustment cartridge 2" x 4-1/4".

- **Shade cartridge** - Auto-darkening welding filter with automatic shade adjustment 3/10 or by use of an additional colored filter. (+1 shade) 4/11.
- **Viewing area** - Darkens automatically within a fraction of a millisecond.
- **Solar cells** - The use of solar energy means that an on/off switch and change of battery are no longer needed.

Part No. K590



### Magnification Lenses

Eliminate the need to wear eyeglasses under your Optrel® welding helmet with any of these magnification lenses. Simply remove the existing inside cover plate and insert the plate of your choice (a universal fit with all Optrel® helmets).

Part No. K5816- 1.0 diopter

Part No. K5818- 2.0 diopter

Part No. K5817- 1.5 diopter

Part No. K5819- 2.5 diopter

### Hard Hat Adapter

- For easy attachment of any Optrel welding helmet to a hardhat.

Part No. K5930

